



SERVICE PARTS LIST

BULLETIN NO.
PN0004159

SPECIFY CATALOG NO. AND SERIAL NO. WHEN ORDERING PARTS		REVISED BULLETIN	DATE
5" Cutting Dust Shroud			Nov. 2025
CATALOG NO.	49-40-6205	SERIAL NO.	R39A
WIRING INSTRUCTION			

EXAMPLE:

00	0
----	---

 Component Parts (Small #)
 Are Included When Ordering
 The Assembly (Large #).

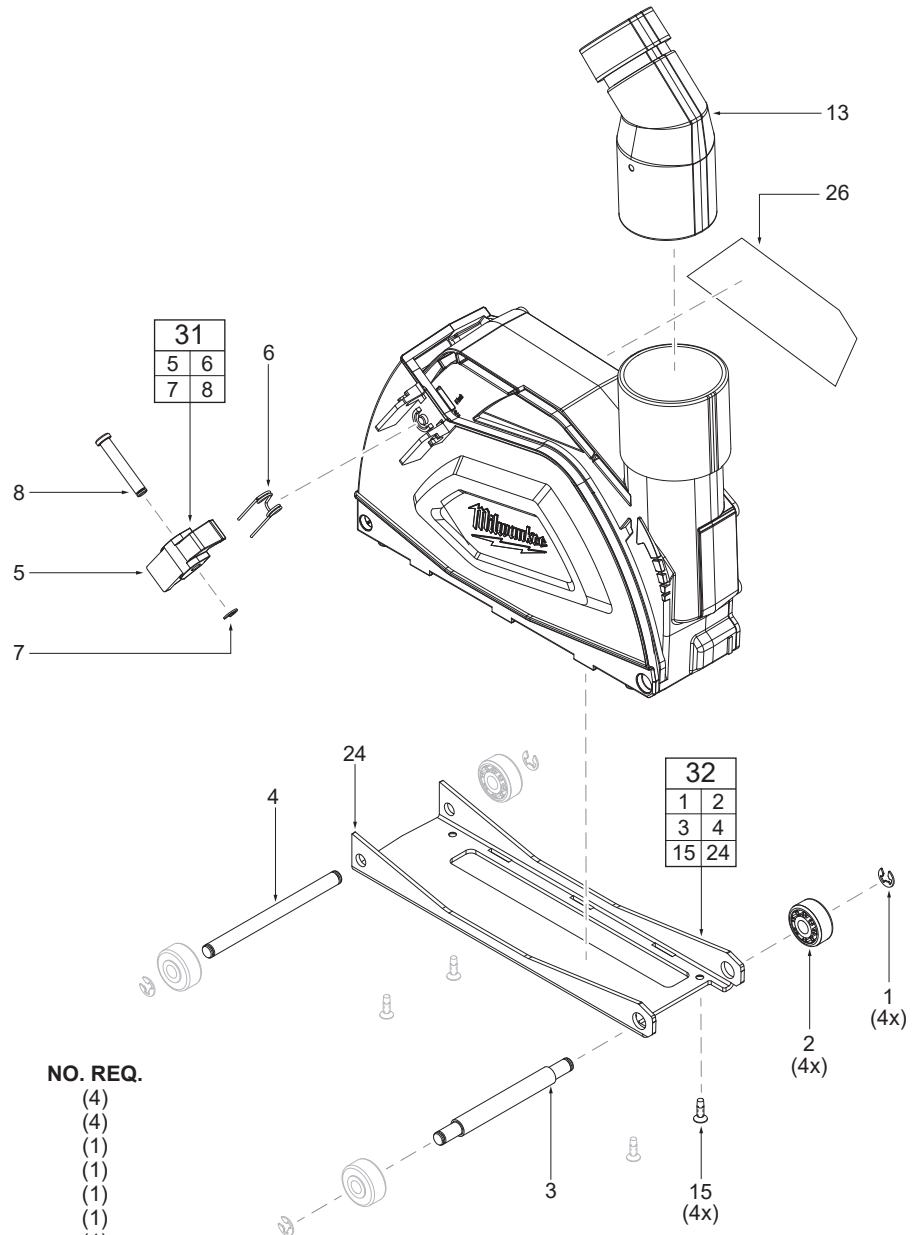


FIG.	PART NO.	DESCRIPTION OF PART	NO. REQ.
1	-----	E-Ring	(4)
2	-----	Wheel	(4)
3	-----	Front Wheel Shaft	(1)
4	-----	Back Wheel Shaft	(1)
5	-----	Lever	(1)
6	-----	Lever Spring	(1)
7	-----	E-Ring	(1)
8	-----	Lever Pin	(1)
13	31-55-0503	Tube Connector	(1)
15	-----	M3 x 10mm Flat Hd. T-10 B Screw	(4)
24	-----	Guide Rail	(1)
26	12-20-9105	Service Nameplate	(1)
31	31-55-0502	Lever Kit	(1)
32	31-55-0501	Guide Rail Kit	(1)

FIG. SERVICE NOTES
 26 A clean, dry surface is essential for proper performance for any adhesive system. The area intended for application of any adhesive label or nameplate must be prepared by cleaning with isopropyl alcohol. The solvent is to be applied with a clean, lint free applicator and the surface allowed to dry before applying the label or nameplate.

TORQUE SPECIFICATIONS				
FIG.	PART NO.	WHERE USED	SEAT TORQUE	
			(kgf-cm)	(lb-in)
15	-----	Guide Rail	8±1	7±1